

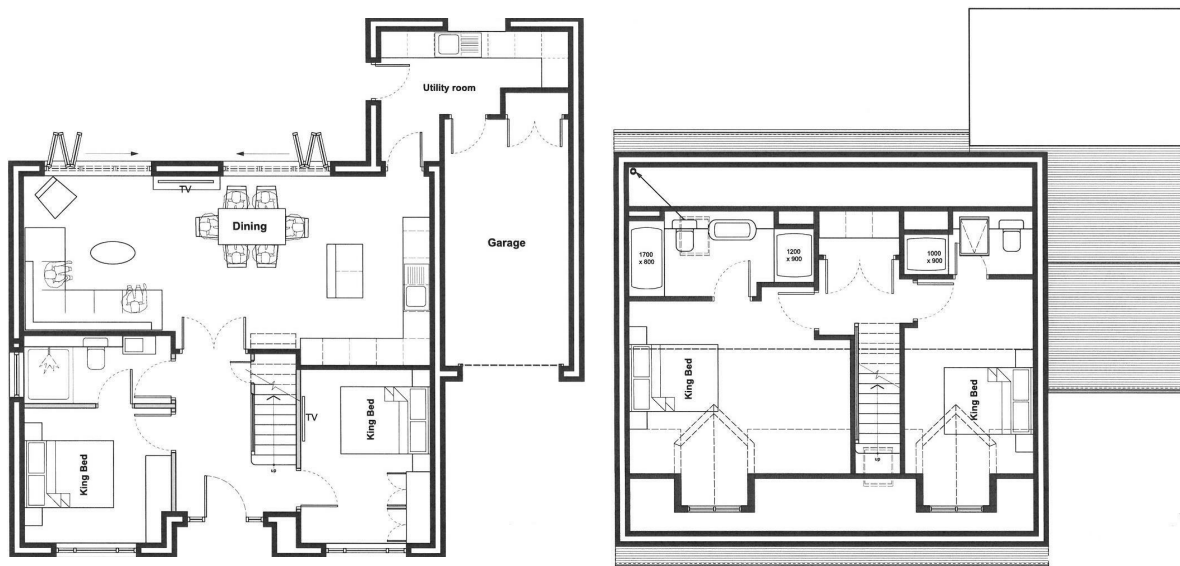


Plot 1 Christopher Rise, Pontlliw, Swansea, SA4 9EN

Price £425,000

- OFF-PLAN RESERVATION NOW AVAILABLE
- DIFFERING STYLES AVAILABLE
- VERSATILE ACCOMMODATION OVER 2 FLOORS
- GARAGE
- SOUGHT-AFTER LOCATION





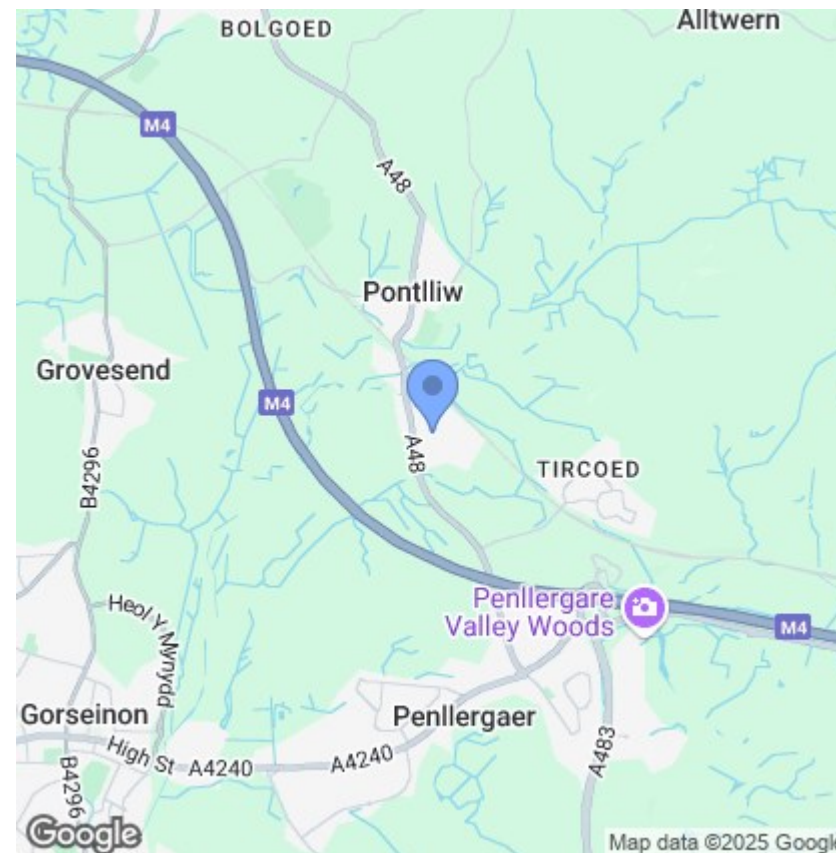
Description

We are pleased to announce the release of this long-awaited development which is adjoining the well-know Cadwr listed, historic 'Poplars' and will eventually form part of the unique 'Poplars Development'

PLEASE NOTE, IMAGE SHOWS CURRENT BUILD STAGE OF PLOT 1.

Choice of styles, each detached, each with 3 bathrooms/W.C. s . PLOT 2 (DIFFERENT STYLE) PRICED AT £395,000.

PLOT 1 IS PRICED AT £425,000 and although now reserved, more properties of this style available.



Directions

Postcode for Satnav: SA4 9EN

Viewings

Viewings by arrangement only.

Call 01792 653 100 to make an appointment.